

September 2020

No: 684

## District 75th Anniversary

In May 1944 came two important changes, Sir Percy Everett, Deputy Chief Scout, and from the very beginning County Commissioner of Hertfordshire and Middlesex, resigned from his County posts, owing to increasing work during the serious illness of the new Chief Scout, Lord Somers. And at our own local level, Letchworth and Baldock were at last united as one District in their own right. The newly appointed County Commissioner, Graham Wallis, came to meet a large assembly of Boy Scouts in the great meadow at Norton on 17 June 1944, and while pleased that numbers in the movement were increasing, said something very familiar - that there was a shortage of Leaders, many of whom had inadequate time, and were trying to do three or four jobs at once. The CC inspected the troops present (First Ashwell, First Baldock, Second, Fourth and Seventh Letchworth and the still combined First-Third-Sixth) and congratulated the District Chairman, Mr Alfred Thomas Hodgson, who had introduced him to the boys. Before the year was out, Ralph West had resigned after many years of outstanding service, and Mr Hodgson was the first District Commissioner for Letchworth & Baldock District Scouts.

(extract from the History of the District K.J.)

It wasn't until the following year that the paperwork was finalised and the Letchworth and Baldock District was truly registered with The Scout Association.

To celebrated the occasion, the District held a badge competition which was won by a Beaver from 7th Letchworth and a Cub from 5th Letchworth . They were presented with their prize on 1st August 2020 at the District HQ.



Wendy Tierney,  
District  
Commissioner and  
Vicki Gage,  
Assistant  
District  
Commissioner  
(Beavers) with  
the designers of  
the winning  
Badges.





5th Letchworth contribution to the 75th anniversary cupcake



***Put your phone down  
and what are you left  
with? Just teamwork,  
courage and the  
skills to succeed.'***

**Bear Grylls, Chief Scout**



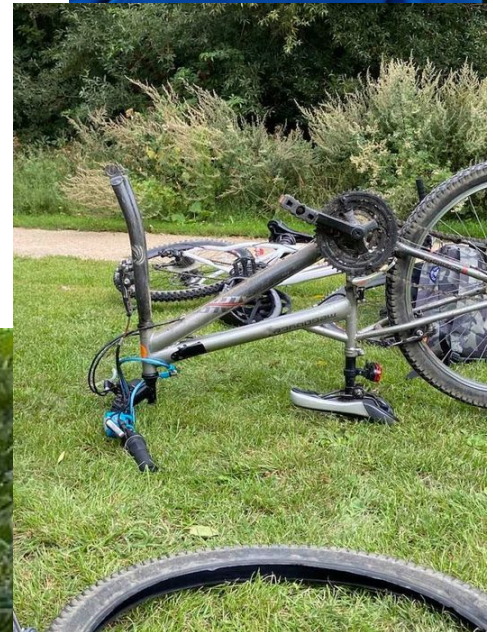
## 8th Letchworth Scout Group

8th Letchworth Scouts have held three outdoor activities during the summer holidays.

1. Their first face 2 face meeting in what feels like forever was a gentle walk in the local area walking from Radwell Meadows car park to Standalone Farm.
  2. Meeting at Norton Common to complete the photography badge.
  3. Cycling from Sandy to Bedford along the old railway line.
- (have any other Groups had face 2 face meetings? Please let the editor know so it can be shared with everybody in the District)



A quick 5 miles on the Greenway and they're still smiling. Well done



Pit crew on their way to Halfords . Red Bull pit stop record is in no danger of being broken today.



Scouts are fine tuning their photographic skills .





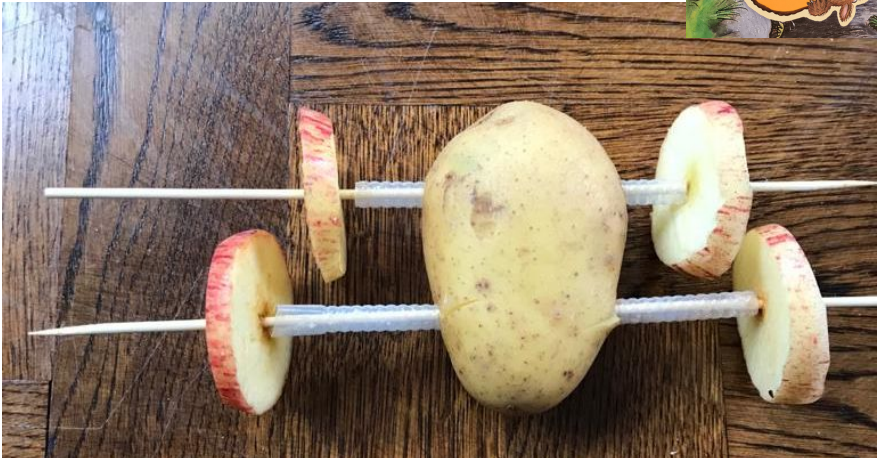
# 4th Letchworth Cubs

4th :Letchworth Cubs have been meeting via Zoom and have done the following activities.

1. They all made cars out of vegetables and raced them
2. They took part in a Harry Potter escape room
3. The Cubs loved the minesweeper game
4. Lots of Kahoot
5. Monster game: all Cubs hear the same instruction, but the monsters come out very different.











JOTA-JOTI, our largest digital event, is less than 2 months away! Join young people around the world from October 16-18 for friendship, global citizenship and overall fun online and by radio.

**Register now at**  
**[www.jotajoti.info](http://www.jotajoti.info)**

## **Overall readiness levels - the latest information - updated 3rd September 2020**

We still don't meet the criteria to move to Yellow, therefore these welcome changes only apply within Amber and should give leaders more flexibility over the coming months.

We can confirm the following changes to the rules for Amber readiness in England:

- Indoor activities are now allowed, but outdoor activities are preferred and should be encouraged.
- Numbers change to 15 young people and up to five leaders (carers can be in addition and will not be counted in these numbers) – this applies both indoors and outdoors. Leaders can also include Young Leaders.
- Young people must stay in their limited group size but adults will now be able to move between these groups, ie across the 25m spacing if outdoors or to a section meeting at a different time on the same day.
- Leaders don't need to wear a face covering when delivering activities – however, it's recommended to wear one in all other circumstances.

Scouts and Explorers must now wear face coverings indoors. Exceptions as per national guidelines are permitted.

For now, all young people in all sections must continue to social distance by 2m from each other where possible and from adult volunteers at all times



# The Scout Association - Membership Fee 2021

## Next Year's Census

In the last all members' online meeting in June the Board explained the plan to move our annual Census to 15 October 2020 to help with our financial predictions for the upcoming year. Since making this announcement, a number of concerns were raised by volunteers locally and they took further soundings and then asked the Board to decide on the date to collect our annual Census for next year. The options were:

- Collect a Census (lite) on 15 October 2020
- Collect a normal Census on 31 January 2021

To help the Board make a decision, the Board asked County/Area/Region Commissioners to vote on the date they felt would be best to collect their Census figures locally. Of the 55 CCs who responded, 30 of them thought it would be better to collect Census on 31 January 2021. Most argued that that whilst collecting Census in October would help them plan financially, it would have a large impact on the accuracy of their figures. **Therefore, the Board has decided that we undertake a normal Census on 31 January 2021, and then future Censuses, we would move to undertaking our census in the autumn (for the following year).** Counties may well be gathering membership data in the autumn to inform their budgeting next year.

**The Board have decided to increase the membership fee for 2021 –22 by £7.50, from £29.00 to £36.50 for all members under 18 with £1.50 ring-fenced for hardship funding for Groups who can't access funding. (£36.00 for prompt payment by 23 April 2021)** This will help to ease some of the financial pressure nationally and also make sure we're providing support locally to those Groups who need it most.

	2020	2021
Headquarters	£29.00	£36.50
County	£13.50	TBA
District	£ 6.50	TBA
(Includes International Levy£1.00)		
<b>Total</b>	<b>£49.00</b>	<b>TBA</b>



Glenn Read, 12th Letchworth BSL, has been invested as an Assistant Explorer Scout Leader with the Oak Eagle Explorer Scout Unit,



# Achievements



## Chief Scout's Bronze Award

Alfred Hilton

7th Letchworth



## Chief Scout's Silver Award

Patrick Carey

2nd Baldock

Rufus Creevy

2nd Baldock

Oliver Dean

12th Letchworth

Deaglan Eccles

2nd Baldock

Hannah MacArthur

1st Baldock (Knights)

Henry Peacock

2nd Baldock

Henry Pedersen

2nd Baldock

Felix Pennell

2nd Baldock



## Chief Scout's Gold Award

Matthew Kendrick

1st Ashwell

Robert Kendrick

1st Ashwell

William Murphy

2nd Baldock

**Printed by: Print Factory,  
32 Whitehorse Street  
Baldock SG7 6QQ  
01462 896289**

  
**CARRY  
ON  
SCOUTING**

Editor:  
Rita Hawkins  
1 South Close, Baldock  
Hertfordshire  
SG7 6DS  
Tele: 01462 643432  
e-mail  
[co-ordinator@lbdscouts.org.uk](mailto:co-ordinator@lbdscouts.org.uk)