

Co-ordinator 178

March 1974

## SCORES

CUB SCOUT QUIZ  
26 February 1974  
1....7L.....102  
2....2L.....92  
3....8L.....88  
4....5L.....87  
5....1A.....85  
6....4L(C)...83  
7....4L(M)...77  
8....1-3L....76  
9....reserves75  
10....1B(K)...73  
11....10L.....72  
Maximum points  
were 168.

\*\*\*\*\*

Proposal for consideration at the Pack Scouters' Council: Should points be deducted (even if only in the Just-for-Fun League?) for Cubs not in uniform at District events? At the quiz, far too many multi-coloured long trousers were on display: two pairs each in 1-3L and 2L and 4L(M), one pair each in 5L and 1B(K). Or, are the boys to blame? Only three of the eleven adult scorers appeared to be in uniform. and is smoking continuously through the proceedings truly inductive to self-discipline among the boys we are supposed to be training? Your views would be welcome in next month's CO-ORDINATOR

## CAPITATION FEES

The District Executive is not altering the 25p capitation fee (due at the end of this month for all invested members of your Group: please be prompt!) With the 65p national Headquarters fee for insurance, legal and administrative services, and the unchanged 20p for County, the total per head is £1.10. The District Treasurer, John Moys, 2 Paynes Close, Letchworth (phone 5067) will gladly discuss matters with any Group Scout Leader in difficulties.

## CYCLOCROSS!

Details have been circulated to all Troops and (rather belatedly with apologies) Packs. The event has attracted more than 50 Scout entries alone. It starts at Greenslade Farm on the Ashwell - Steeple Morden road at 1400 on Sunday 3 March.

## BALDOCK GUIDERS

SATURDAY 9 MARCH: LA and District jumble sale, Catholic Church Hall, 2 pm. Articles may be brought in from 9.30 am till 12. Guiders' help will be needed, please!

THURSDAY 7 MARCH: All Guide Guiders are invited to attend the Guide study group at 5 Ashwell Road, Bygrave (by kind invitation of Mrs Brett) at 8 pm

THURSDAY 14 MARCH: Guiders' meeting, Knights Templar School, 7.45 pm. Please bring your ideas for the special event to celebrate Brownie Jubilee Year. And remember this is the last date for handing in your census forms and CO-ORDINATOR subscriptions!

REMEMBER the County AGM at County Hall, Hertford, Saturday 16 March at 3 pm; and th. Patrol camp permit training at Hitchin on 23 March.

## DHQ CHARGES

The new scale of charges for the use of District Headquarters in Icknield Way, Letchworth, is:  
Scout meetings....£1 an evening  
Jumble sales for resident Scout groups (1-3L and CHVSU): £1  
Other Scouting activities for any Group.....£3  
Non-Scouting activities:£1 per hour  
Whist drives as at present for Scout funds.....50p

## DISTRICT CUB SCOUT FIRST AID CONTEST

SATURDAY 30 MARCH 1974, at St John Ambulance Headquarters, Birds Hill, Letchworth. Teams of FOUR Cub Scouts, all under 11, should report at the following times, in uniform. No equipment is required. All tests will be based on the Cub Scout Handbook.

1400...5L	1530...2L
1415...8L	1545...10L
1430...1B(K)	1600...7L
1445...1B(T)	1615...1-31
1500...1A	1630...4L(M)
1515...4L(C)	

## LETCWORTH NORTH GUIDERS MARCH

9: County Trefoil Guild AGM

15: Census forms and money are to be returned to the DC - cheques payable to North Hertfordshire Girl Guides.

19: District meeting, 8 pm at Mrs B. Crombie's, 16 Hawthorn Hill

30: District jumble sale at Scout HQ (in aid of Guide County Office)

Note: A gold bracelet was picked up in St George's church after the parade. The owner should please get in touch with Mrs Phillips at 29 Haselfoot (phone 71705)

## CHANGES OF ADDRESS

John & Wendy Kirbyshire (1A), 2 West End Lane, Pottton, SANDY, Bedfordshire  
Vice-President Michael Kelly, 94 Cowslip Hill, Letchworth  
Ray Andrews (4L), 24 Radburn Way, Letchworth (phone 4226)  
Ken Reader (CHVSU), c/o SERL, Baldock  
(Any more? Please let us know!)

## INVITATION

Older Scouts and all adults in the movement are invited to the dedication of the new colours of Champion Hills Venture Scout Unit at St Paul's Church, Letchworth, on Monday 25 March at 8.15 pm. The ceremony will be followed by a cheese and wine reception. Uniform is requested. The dedication is to be carried out by the Rev. D.D.Hart, County Anglican Chaplain.

Letchworth & Baldock  Scouts & Guides

# GANG SHOW

at Saint Francis' Theatre

TUESDAY TO THURSDAY  ONLY  16-18 APRIL

TUESDAY 16 APRIL : ADULTS 25p, CHILDREN 15p; PARTIES OF TEN OR MORE (ADULTS 20p  
(CHILDREN 10p)

WEDNESDAY 17 APRIL : ADULTS 35p, 30p, 25p; CHILDREN 15p in all parts

THURSDAY 18 APRIL : 35p, 30p and 25p - no half prices

## SCOUTING AHEAD

### MARCH 1974

- 2 Tenth Letchworth Group's DISCOTHEQUE for all the family: Jackmans Community Centre
- 3 DISTRICT SCOUT (Cub and Venture Scout) CYCLOCROSS, from Greenslade Farm, Steeple Morden, 1400
- 4 8L Trojans at home to 1B in first round of Hall Trophy quiz, Northfields Junior School, 1930
- 5 DISTRICT PACK SCOUTERS' COUNCIL, 31 Lordship Lane, 2015. Please let us have at least one representative of each Pack in the District:
- 9 The District Gang Show's own JUMBLE SALE, DHQ, 1500
- 17 County Great Patrol Hunt CANOEING DAY at Stanborough Lakes, Welwyn Garden City: see HSN/HG and the Broadsheet for February
- 22-24 District training course for Patrol Leaders and APLs, at Great Barford. All details have been circulated, and applications should be in to DSL Jeff Robson by Friday 8 March.
- 23 Fifth Letchworth JUMBLE SALE, 35 Spring Road
- 25 DEDICATION OF COLOURS for Champion Hills Venture Scout Unit, at St Paul's Church, Letchworth, 2015. See page 1 for details. \*\*\*
- 28 DISTRICT PATROL LEADERS' COUNCIL, DHQ, 1900 : all PLs and APLs in the District are expected to attend in uniform
- 30 DISTRICT CUB SCOUT FIRST AID CONTEST, St John Ambulance HQ, Letchworth, 1400 (for list of times see page 1)

### APRIL 1974

- 6 ANNUAL ARTS AND CRAFTS COMPETITION FOR THE PLINSTON TROPHY : see page 3 for full details
- 9 DISTRICT EXECUTIVE committee, DHQ, 2000
- 15 Gang Show full dress rehearsal
- 16-18 DISTRICT GANG SHOW at St Francis' Theatre: see panel above
- 25 District Patrol Leaders' Council
- 29 Tenth Letchworth Group annual general meeting, Jackmans Community Centre, 1930

### MAY 1974

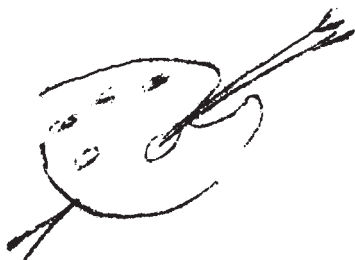
- 1 Fifth Letchworth Group annual general meeting, 35 Spring Road, 1930
- 11-13 COUNTY PATROL GATHERING at Weston Park, with visit of the Chief Scout (for full details, consult HSN/HG and the broadsheet each month)
- 18 Second Letchworth Group annual general meeting, St George's hall

- 
- 11 JUNE : District Executive Committee
  - 14 JUNE 2 Champion Hills Venture Scout Unit Barn Dance
  - 15-16 JUNE : Lightweight Camping Competition for the Icknield Shield
  - 27 JULY - 10 AUGUST : ORBIT '74 : District Scout Expedition
  - 28-29 SEPTEMBER : Operation Ferret for the Whalebone Trophy
  - 5-6 OCTOBER : Operation Lifeboat (see "Scouting" magazine)
  - 27 OCTOBER : Barton Shield First Aid Competition for Scouts
  - 17 NOVEMBER : B-P Guild Cup Winter Patrol Competition
  - 14 DECEMBER : District Scout Six-a-side Football Competition
- 

\*\*\*Last items for CO-ORDINATOR 179 should reach the District Public Relations Officer by Friday 29 March at the latest, please!

# Letchworth & Baldock Scouts ARTS AND CRAFTS 1974

1. The exhibition is held annually at a place and time decided by the District Scout Council. The tenth exhibition will be held at Highfield School, Letchworth, on Saturday 6 April 1974. Entries are to be handed in between 7 and 9 pm on Friday 5 April, and perishable items between 9.30 and 10.30 am on Saturday 6 April, for judging between 10.30 and 12.30 and public exhibition from 1 to 3.30 pm. The trophies will be presented to the winning group and sections at the conclusion of the exhibition.
2. In the event of any dispute, final decision rests with the Convenor appointed by the District Scout Council, namely VSL Colin Phillips of 29 Haselfoot, Letchworth.
3. The following sections are eligible to enter: (1) CUB SCOUTS of any pack in Letchworth & Baldock District; (2) SCOUTS of any troop in Letchworth & Baldock District; (3) ADULTS, namely Venture Scouts, Scouters, members of Friends of Scouting, Group Councils or the District Scout Council in Letchworth & Baldock District. If a boy has passed his eleventh birthday on the day of the exhibition, the entry must be made in the Scout section; if he has reached or passed his sixteenth birthday, entries must be in the Adult section.
4. The exhibition is divided into the following classes: (1) PAINTING - any original landscape, portrait, still life, abstract, etc, in oil or water colour; (2) DRAWING - any original drawing or sketch in pencil, crayon, pen and ink, etc.; (3) COLLAGE - any original design in fabric; paper or other material mounted on a base for wall hanging; (4) METALWORK - handmade or machinemade original metalwork of decorative or useful articles; (5) WOODWORK - as for class 4, but of wood; not being made from a kit; (6) POTTERY - decorative or useful pottery, glazed or unglazed; (7) SIMPLE HANDCRAFT - any article made from ordinary objects and materials found around the house and garden; (8) WORKING MODELS - not from construction kits; (9) SPONGE CAKES - plain, with simple filling; (10) LARGE CAKES - any description, with or without decoration, though this will be taken into account by the judges; (11) SMALL CAKES - at least half a dozen of the same type, as for class 10; (12) WINEMAKING - home-made wines (no entries in Cub Scout or Scout sections); (13) PHOTOGRAPHY: COLOUR SLIDES; (14) PHOTOGRAPHY: HOME PROCESSED - monochrome or colour prints, with notes on processing methods; (15) PHOTOGRAPHY: COMMERCIALY PROCESSED - monochrome or colour prints; (16) MINIATURE GARDEN - in container not larger than 12 inches across (entries in Cub Scout and Scout sections only).
5. The Plinston Trophy will be awarded for one year to the Group with the greatest number of points gained in the Cub Scout and Scout sections. Groups with two Cub packs will have their points added separately to those of the Scout troop (and vice versa). Groups with two Cub packs and two Scout troops will have these sections paired by mutual agreement before the day of the competition.
6. Separate trophies will be awarded to the sections gaining most points: the Blaxland Trophy for the Cub Scout pack, and the Watson Trophy for the Scout troop. Any two packs or troops within the same Group will be entered separately for these trophies. The Eaves Trophy will be awarded to the individual gaining the highest number of points in any or all of the classes in the Adult section.
7. Points will be given as follows. 5 for best exhibit in section; 4 for first prize; three for second prize; two for third prize; one point at judges' discretion for each highly commended entry. The best item in each section will not qualify for any other award of points.
8. Winners of the trophies will return them to the Convenor not later than the day preceding the exhibition next year.
9. There is no entry fee, and no limit on the number of entries.
10. Leaders of each pack and troop, and individual Adult entrants, are responsible for delivering entries to the exhibition and removing them between 3.30 and 4 pm on the day of the exhibition. The Convenor and his assistants cannot accept responsibility for entries not collected at these times.
11. No one will remove exhibits from the hall without notifying the Convenor or one of his assistants.
12. Judges will be appointed by the Convenor. No person will be appointed as a judge who holds any office in any part of the Scout organization for this District.
13. The Convenor reserves the right to cancel a class for any reason or to limit the number of points for a class with a small number of entries.
14. Each entry will have an official identification label, yellow for Cub Scouts, green for Scouts, and white for Adults, correctly filled in and securely attached.





LETCHWORTH NORTH AND SOUTH

*Guides*

AND RANGER GUIDES

ART AND CRAFT CONTEST

*1974*CLASSES:

1. ART: a painting, drawing or sketch - any subject.
2. COLLAGE; free choice of subject.
3. COOKING: a sponge cake (there is a suitably recipe on page 152 of the Guide Handbook). Guides make it plain and with filling; Ranger Guides are asked to decorate it when cooked.)
4. KNITTING OR CROCHET: child's matinee coat or dress, or girl's jumper or cardigan (not a poncho).
5. SEWING: a blouse or dress with inset sleeves.
6. EMBROIDERY : any type.
7. FLOWER ARRANGING: a miniature display in which flowers and container do not fill a volume greater than 6" x 6" x 6".
8. SOFT TOYMAKING: any soft toy.
9. HANDCRAFT: any craft not specified above, e.g. woodwork, metalwork soapcarving, pottery, tie-dyeing, basketry, mosaics, papier-mache, macrame, string sculpture.
10. SPECIAL UNIT CLASS: Guides: Knitted squares (to pattern) made up into a blanket. Rangers a Prayer book.

RULES:

1. Age groups; Junior Guides - 10, 11 and 12 years.  
Senior Guides - 13, 14 and 15 years.  
Ranger Guides - 14, 15, 16, 17, 18 and 19 years.
2. Each girl may enter only one item in each class, except class 9 where she may enter any number provided they are all different crafts.
3. All articles must be the unaided work of the competitor and made during the past twelve months.
4. The stewards reserve the right to re-allocate an entry if they consider it has been entered in the wrong class.
5. Entries for classes 1, 2, 4, 5, 6, 8, 9 and 10 are to be handed in between 7 and 9 pm on Friday 5 April at Highfield School. Entries for classes 3 and 7 only are to be handed in between 9.30 and 10.30 on Saturday 6 April.
6. Only Guiders or their accredited representatives will be allowed to remove the entries, which must be collected between 3.30 and 4 pm on the day of the competition. Members of the movement and the public will be admitted between 1 and 3.30 pm to view the exhibits after the judging has taken place. Trophies will be presented at the Guide AGM.

LETCHWORTH NORTH AND SOUTH

*Brownie Guides*ART AND CRAFT  
CONTESTS*1974*CLASSES

1. ART: a painting, drawing or sketch - any subject.
2. COLLAGE: free choice of subject.
3. COOKING: six small cakes using recipe in Brownie handbook (page 149, first edition)
4. KNITTING OR CROCHET: mittens, hat, teacosy or hot water bottle cover (not a poncho).
5. SEWING: an apron.
6. EMBROIDERY: any type.
7. FLOWER ARRANGING: a miniature garden on a circular metal foil or cardboard plate not more than 8" diameter.
8. SOFT TOYMAKING: any soft toy.
9. HANDCRAFT: any craft not specified above, e.g. woodwork, metalwork, soapcarving, pottery, tie-dyeing, basketry, mosaics, papier-mache, macrame, string sculpture..
10. SPECIAL PACK CLASS: Make a nature scrap book.

RULES:

1. Age: Brownie Guides, 7, 8, 9 and 10 years, i.e., not having reached their eleventh birthday by the day of the competition.
2. Each girl may enter only one item in each class, except class 9 where she may enter any number provided they are all different crafts.
3. All articles must be the unaided work of the competitor and made during the past twelve months.
4. The stewards reserve the right to re-allocate an entry if they consider it has been entered in the wrong class.
5. Entries for classes 1, 2, 4, 5, 6, 8, 9 and 10 are to be handed in between 7 and 9 pm on Friday 5 April at Highfield School. Entries for classes 3 and 7 only are to be handed in between 9.30 and 10.30 am on Saturday 6 April.
6. Only Guiders or their accredited representatives will be allowed to remove the entries, which must be collected between 3.30 and 4 pm on the day of the competition. Members of the movement, parents and the public will be admitted to view the exhibits between 1 and 3.30 pm after judging has taken place. Trophies will be presented at the Guide AGM.