

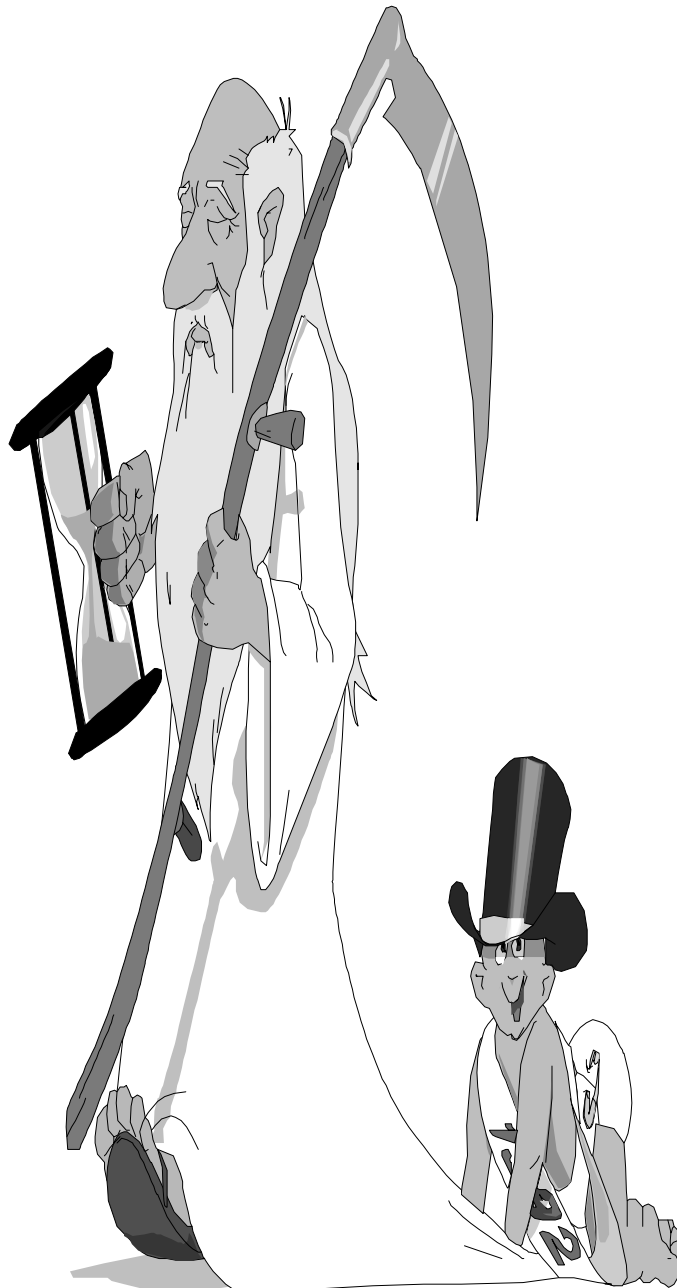


January 2001 No: 467



Co-ordinator

2001 - A Year of Change and Challenge



Welcome to 2001 - it is going to be a year of change and challenge. Already we know the new structure of Scouting and the changes which it brings to the older sections. In the current issues of Co-ordinator and HSG we have the results of the uniform review and the new uniform that we will soon be wearing. Later in the year the new programme will be revealed. We may be apprehensive of change but it is worth reflecting that the Scout Movement is approaching its Centenary. It is a remarkable achievement to have maintained its strength over such a period of years.. It has only been able to do this by adapting its programme to changing social conditions and now is the time to ensure that our programme is ready for the next century. Change gives the opportunity to try out new ideas and set new challenges so please be positive in adopting the new proposals. Working together as a District we can look forward to the change and the new sense of direction it brings to our programme.

There will also be a change of leadership. I will be retiring in August so there will be a new District Commissioner and a new District Team—a chance for new people with new ideas to take the District forward

In the meantime I look forward to all the Group and District events planned for the New Year and enjoying the excitement of Scouting and your companionship.

Successful Scouting to you all in 2001

Bob Williams—DC

The Letchworth & Baldock District Scout Bulletin



The Scout Association Time Capsule Project

Every Scout, Scout Group and Scouting family are invited to help create a unique record of the Movement.

The Scout Association is constructing a giant time capsule containing thousands of items from Scouts from all over Britain. It will be buried in a special **Scout Time Capsule** on the land of Lord Redesdale in Northumberland and will form part of an archaeological site created by Lord Redesdale to promote and safeguard modern archaeology. It will be sealed in September 2001 and will remain buried for 200 years.

Who Can Take Part ?

Everyone is invited to take part. Time Capsule Packs are available at a special price of £39 and contain everything needed to take part in the project.

Who Will Open The Time Capsule ?

Anyone taking part gets a certificate which means you can choose who will open your time capsule pod in 200 years time. Whether it is your Scout Group of 2201 or your family's great, great, great descendants they will be opening a treasure trove left for them by you.

This will leave a fascinating record of the Movement created by you, for the Scouts of the future. Already Scouts from all over Britain are taking part and we hope everyone will take this opportunity in helping to create this unique archive.

If you would like to order your time capsule pack:

Call us on	0191 261 6784
Email us at:	scouts@millennium-timecapsule.com
Or visit our website at:	www.millennium-timecapsule.com/scouts

ANNUAL CENSUS 2001

By now all Groups should have received a CD-Rom from the Scout Association containing information about the Census.

The Census information can be sent back to the Scout Headquarters in one of three different ways

- * by Email
- * by Diskette
- * by Print and Post

Using Email is the preferred method as it is instantaneous and reduces unnecessary handling. This is the method the District would like you to use. If this is not possible or you have any problems please contact * Ron Smith or *Deb Ivory-Webb.

A printed copy of the form should be given to the Group Treasurer to use when making payment of the Membership Subscription to the District Treasurer.

This form must be sent to the Scout Headquarters by 14 February 2001. However, there are usually problems to be resolved before the figures are finalised so I would be obliged if you would let Ron Smith have a copy of your return by Friday 26 January (preferably much earlier).

* Ron Smith, 32 Cloisters Road, Letchworth	01462 682900
* Deb Ivory-Webb, 26 Sale Drive, Baldock	01462 894744

Uniform Review

BEAVER SCOUTS

A Group scarf
A turquoise crew-neck sweatshirt

Navy blue activity trousers and a turquoise polo shirt will be available as optional extras

CUB SCOUTS

A Group scarf
A dark green crew-neck sweatshirt. (Note this is a different shade of green from the Scout Section)

Navy blue activity trousers and a dark green polo shirt will be available as optional extras.

SCOUTS

A Group scarf
A dark green long sleeve shirt (Note this is a different shade of green from the Cub Scout Section)
Navy blue activity trousers
The existing Scout belt but showing on the buckle the new arrowhead badge from the new corporate logo.
A dark green polo shirt will be available as an optional extra

EXPLORER SCOUTS

A Group scarf
A beige long sleeve shirt (that is a different beige to that currently in use)
Navy blue activity trousers
The existing Scout belt but showing on the buckle the new arrowhead badge from the new corporate logo.
A beige polo shirt will be available as an optional extra.

MEMBERS OF THE SCOUT NETWORK AND ADULT MEMBERS

A personal choice of Group scarf, universal adult scarf or the Gilwell scarf (for Wood Badge holders)
A stone long sleeve shirt
A personal choice of navy blue activity trousers, smart trousers or smart skirt.
The existing Scout belt showing on the buckle the new arrowhead badge from the new corporate logo.
A lighter weight stone short sleeve shirt will be introduced as an alternative official uniform.
A polo shirt in stone and a tie in place of the scarf will be available as optional extras.

THE SCOUT FELLOWSHIP

The Scout Fellowship should have the option to wear the new uniform and to wear the same uniform as for adult leaders but with an additional item of identification.

A distinctive scarf and cloth badge will be introduced as the identification

More information can be obtained on:
<http://www.scoutbase.org.uk/hq-info/unifom/index.htm> .

Training



Reminders of forthcoming Training dates:-

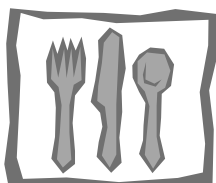
Phase 3	(All Sections) 3 February plus 17 March
Phase 4	(Beavers) starts 19 May
Phase 4	(Cubs) starts 2—4 March
Phase 4	(Scouts) starts 16/17 June
Phase 5	(All sections) 13 February plus 24/25 March

If you require a Booking form then please contact Andrea Soulsby on 01462 643992

NOTE: Phase 3 and 4 can be done in any order, but as Phase 4 is only run once a year for any section then it is a good idea to do that course if you can this year.

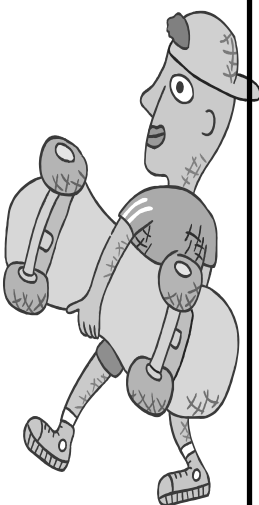
County Training Courses - cost for the food has increased to the following amounts:

Phase 3	£ 7.00
Phase 4 Beaver Scouts	£21.00
Phase 4 Cub Scouts	£42.00
Phase 4 Scouts	£38.00
Phase 4 Venture Scouts	£38.00
Phase 5	£21.00



Waiting Lists

Are there any Packs which have a waiting list and who cannot accommodate young people of Cub age into the Pack. Please consider passing their names to Dave Hawkins ADC (Cubs) as a number of packs have low numbers and can offer them places immediately.



Congratulations

To Deb Dilley ADC(Beavers) and Dave Hawkins ADC (Cubs) on completing their Commissioner Training.
Dave Upson, 1st 3rd Letchworth and Wendy Tiereny 2nd Weston have had their appointments revised to GSL's. Sheila Tickner has been appointed as GSL at 8th Letchworth, Sheila was a member of the Potters Bar District and is an experienced Scout Leader. We wish them well in their new roles.

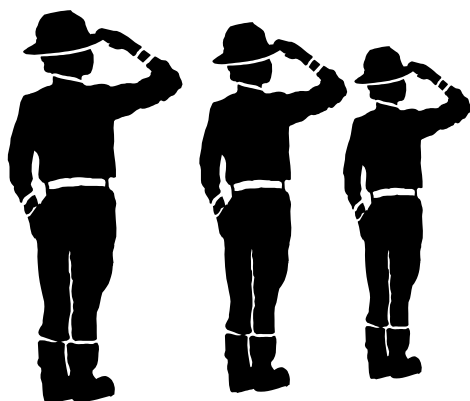
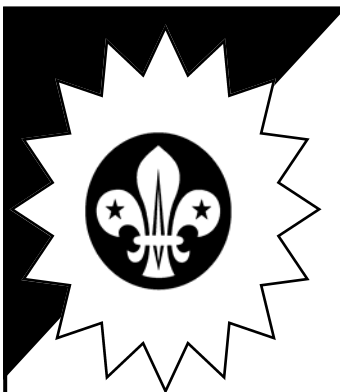
GREEN BERET NOVEMBER 2000

Two Troops took part in Green Beret, 1st Baldock and 2nd Baldock. With Chris King ADC (Scouts) and parental back-up in the form of Sheila & Terry Battison and Tony Fryer the Scouts were well supervised. 1st Baldock being more experienced came a well deserved sixth place. 2nd Baldock came sixteenth which is a pleasing result for a team of novices.



Well done to all the Scouts who took part and I've heard on the grapevine that 2nd Baldock enjoyed it so much that they have asked to go next year.

We look forward to more troops taking part next year.



Contact:
John Wright

Tel 01462 673779

GANG SHOW

Put the Gang Show dates in your programme.

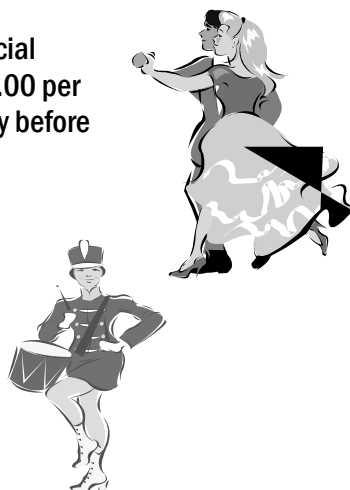
Group Bookings at a special concessionary rate of £2.00 per ticket if you order and pay before the 31 January 2001.

After this date they will be full price.

Friday 30 March 7.30 pm

Saturday 31 March 2.30 pm

Saturday 31 March 7.30 pm



The Scout Association



WORLD SCOUT JAMBOREE - THAILAND

29 DECEMBER 2002— 8 JANUARY 2003

Calling all Leaders - are any of your young people born between 29 December 1984 and 28 December 1988. Then they are eligible to be considered as part of the Hertfordshire contingent. The District will hopefully be sending two young people. The cost will be £2900 which will include all UK activities pre-Jamboree and first world contribution to the developing nations attending the Jamboree.

As in past World Jamborees the District will meet one third of the cost, one third will hopefully be met by the Group and one third by the participant. This will involve fund raising.

The 20th World Scout Jamboree emblem shows a typical Thai roof with the World Scout Emblem at the centre. The roof shape represents Thailand, the host country of this major gathering of the world brotherhood for Scouts from all cultures and continents. The 20th World Scout Jamboree will be held in Sat-tahip, Chonburi Province, about 180 kms east of Bangkok. The camp site is located on a beautiful beach on the gulf of Thailand. The area covers 1,200 hectares and consists of flat plains, foothills and a white sandy beach sloping down to crystal blue sea suitable for water sports.

If any of your young people are interested please forward their names to Chris King ADC (Scouts) as soon as possible so interviews can be arranged. No later than the end of January 2001.

Chris King ADC (Scouts) Tele: 01462 637901

A one day conference
for Hertfordshire's
Group Chairmen, Group
Scout Leaders, District
Chairmen .

Saturday 24 February
2001

Abbot's Hill School
Hemel Hempstead



Building on Success

AIM - To provide
Group Scout Leaders
and Group Chairmen
a means of Building
on the success of
Hertfordshire Scout-
ing by sharing best
practise and encour-
aging new ideas.

Programme:-

Welcome and Reception (from 8.30 am)
Opening by the County Commissioner—Roger Sands
4 Sessions for all

1. The New Programme
2. Recruiting Adults
3. Group Planning
4. A Positive Image

6 Sessions for you to choose 2

1. Spicing up the Programme
2. Fund Raising
3. Training for you
4. Recruiting Young People
5. Links between the Sections
6. Equal Opportunities



What Scouting is all about—A presentation from a Queen's Scout
Conclusions—our Future (5.30 pm)

Time for relaxation and sharing experiences in the Bar
Conference Dinner and Entertainment 7.30 pm—10.30 pm

Total Cost £50.00, however, if you prefer only to attend the daytime element of the conference, from 9.00 am to 5.30 pm, you may do so for the reduced cost of £35.00

To book a place please complete the application form on flyer that has been sent to all GSL' and DC's, if necessary stating that you require to attend only the daytime conference, and return to Chris Twydell

40 Longlands, Hemel Hempstead, Hertfordshire HP2 4DF

Tele: 01442 405 245

Email: Chris.Twydell@BTInternet.Com

It would be appreciated if all GSL's, Group and District Chairmen were able to attend this conference.

Build in the present with an eye to the future.

The wise will make more opportunities than they find

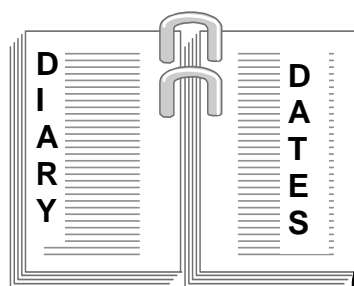
A good word costs no more than a bad one

A wise person hates nobody

Life is made up of getting and giving, and forgetting and forgiving

Never try to appear what you are not

You can recognise the golden years by all the silver in your hair



20012001

JANUARY

8	Cub Leaders Meeting	2nd Baldock HQ	8.15 pm
11	District Executive Meeting	Norton Bury	8.00 pm
18	District Cubs Swimming Trials	Hitchin Swimming Pool	6.30 pm
22	Beaver Leaders Meeting	2nd Baldock HQ	
24	District Team Meeting	Norton Bury	8.00 pm
25	Scout Leaders Meeting	Norton Bury	8.00 pm
25	District Cubs Swimming Trials	Hitchin Swimming Pool	6.30 pm
28	District Scouts Cooking Competition	1st Baldock HQ (note 2nd date change)	
29	GSL Meeting	Norton Bury	8.00 pm

FEBRUARY

8	District Executive Meeting	Norton Bury	8.00 pm
17/18	Operation Ferret	1st 3rd HQ	
20/23	Hatfield & Welwyn Gang Show		
24	County GSL's Conference	Hemel Hempstead	8.30 am -
26	Cub Leaders Meeting	2nd Baldock HQ	8.15 pm

MARCH

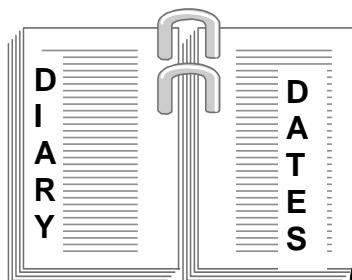
1	St David's Day		
2—4	County Peak Assault	TAB	
8	District Executive Meeting	Norton Bury	8.00 pm
10	County Scout Cooking Competition		
9/11	Phasels Wood Activity Weekend	Phasels Wood	
21	District Team Meeting	Norton Bury	8.00 pm
24	District Beavers Challenge	Norton Bury	
24	County Cubs Swimming Competition	St Albans	
24/25	Sixers & Seconders Weekend	Norton Bury	
25	Mothering Sunday		
26	GSL Meeting	Norton Bury	8.00 pm
30/31	Letchworth & Baldock Gang Show	Plinston Hall	Various

APRIL

1	District Cub Football Competition	Lannock School	
5	Scout Leaders Meeting	Norton Bury	8.00 pm
12	District Executive Meeting	Norton Bury	8.00 pm
13	Good Friday		
15	Easter Sunday		
22	St George's Day Parade & Service	Ashwell	

MAY

10	District AGM		
12	County Cub Football Competition	Baldock	
12 or 13	District Beaver Day Out		
14	Cub Leaders Meeting	2nd Baldock HQ	8.15 pm
18/19	District Scout Camping Competition	Norton Bury	
23	District Team Meeting	Norton Bury	8.00 pm



20012001

JUNE

8 -10	District Cub Camp	Boyd Field—Henlow	
9 –10	District PL's & APL's Weekend	Hitchwood—Hitchin	
10	County Scout Football Competition		
14	District Executive Meeting	Norton Bury	8.00 pm
16	County Beaver Day Out "Full of Eastern Promise"		
16	District Scout Fishing Competition		
25	GSL Meeting	Norton Bury	8.00 pm
28	Scout Leaders Meeting	Norton Bury	8.00 pm
29	25/40 Mile Walk		

JULY

7	District Barbecue	Norton Bury	
7/8	District Scout Kon Tiki Competition	Boyd Field	
12	District Executive Meeting	Norton Bury	8.00 pm
17	Beaver Bangers & Bash	Norton Bury	6.00 pm
28 - 11	Aug Tolmers CCT		

AUGUST

4/11	District Lochearnhead Expedition		
12	Bob Williams DC Retires		
11/18	District Lochearnhead Expedition		

SEPTEMBER

13	District Executive Meeting		
20	Scout Leaders Meeting		
22	County Cub Night Hike	Lees Wood or Phasels	
24	GSL Meeting	Norton Bury	8.00 pm
28/29	County Scout Camping Competiton		

OCTOBER

6	District Beavers Sports Day	Norton Bury	3.00 pm — 5 pm
11	District Executive Meeting	Norton Bury	8.00 pm
14	County Cub Cyclo Cross	Well End	

NOVEMBER

8	District Executive Meeting	Norton Bury	8.00 pm
17/18	County Scout Green Beret	Tolmers	
22	Scout Leaders Meeting	Norton Bury	8.00 pm
23	District Scout Quiz	4th Letchworth HQ	
26	GSL Meeting	Norton Bury	8.00 pm

DECEMBER

13	District Executive Meeting	Norton Bury	8.00 pm
----	----------------------------	-------------	---------